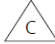
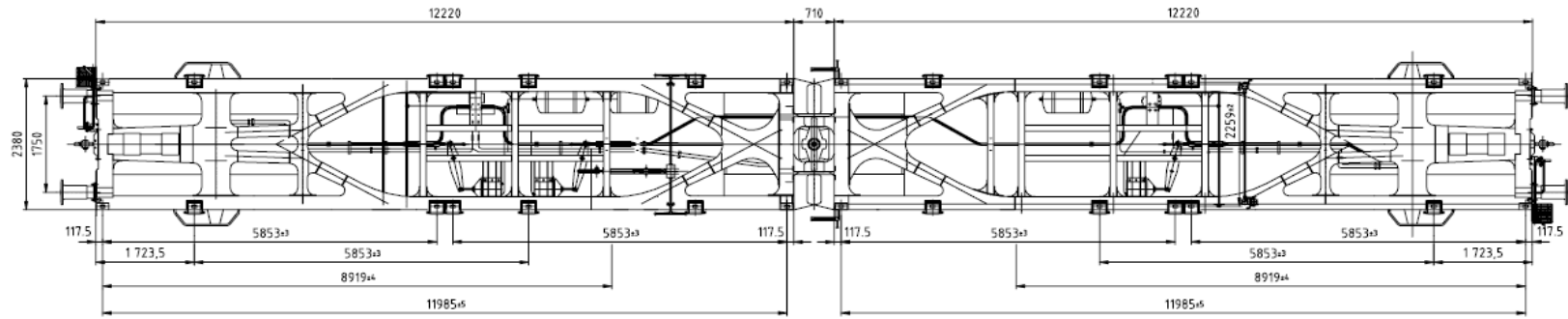
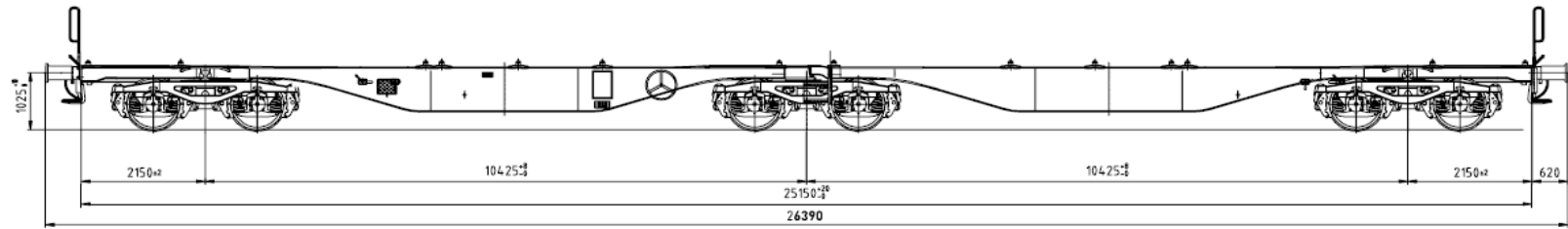


<b>Wagon type: Sggrss 80ft</b>																
<b>PAYLOAD</b>																
Load limits	<table border="1"> <thead> <tr> <th></th> <th>A</th> <th>B</th> <th>C</th> <th>D</th> </tr> </thead> <tbody> <tr> <td>s</td> <td>68.4 t</td> <td>80.4 t</td> <td>95.4 t</td> <td>107.4 t</td> </tr> <tr> <td>ss</td> <td>68.4 t</td> <td>80.4 t</td> <td colspan="2">92.4 t</td> </tr> </tbody> </table>		A	B	C	D	s	68.4 t	80.4 t	95.4 t	107.4 t	ss	68.4 t	80.4 t	92.4 t	
	A	B	C	D												
s	68.4 t	80.4 t	95.4 t	107.4 t												
ss	68.4 t	80.4 t	92.4 t													
Wagon marking																
Tare weight	27,570 kg															
Max. brake weight	110 t															
Hand brake weight	23 t															
<b>DIMENSIONS</b>																
Length over buffers	26,390 m															
Loading length	2 x 12,220 mm															
Distance between bogie centres	2 x 10,425 mm															
Axle base in bogie	1,800 mm															
Height of loading platform over rail	1,155 mm															
Track gauge	1,435 mm															
<b>TECHNICAL DATA</b>																
Bogie	Y25 Ls(s)d1															
Handbrake	present															
Wheelsets	BA 004 (Ø new: 920 mm)															
Axle bearings	BA 182															
Axle load	22,5 t															
Brake	KNORR KE-GP-A															
Buffers	UIC 562-1, Cat. A															
<b>OPERATION</b>																
Area of use	RIV / TEN, G1, GE															
Spigots	28 swivelling ISO spigots with snap-in plates for containers, for loading large and interchangeable containers of various lengths (20ft to 40ft) according to loading plan															
Smallest navigable track curve (single car)	75 m															



**ZUG RENTALS**



**LOADING PLAN**

