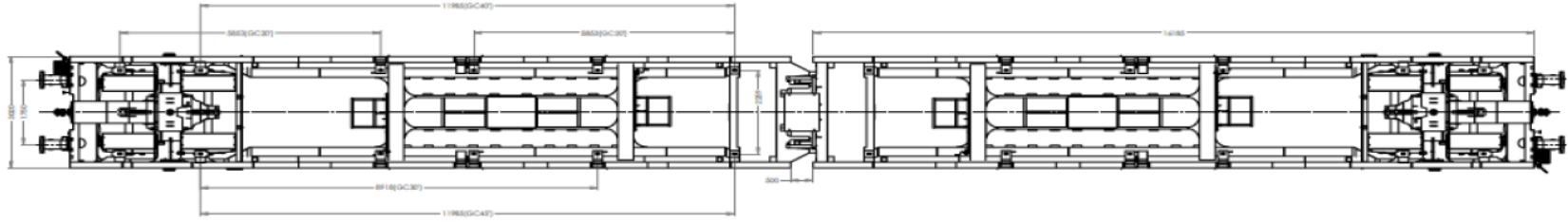
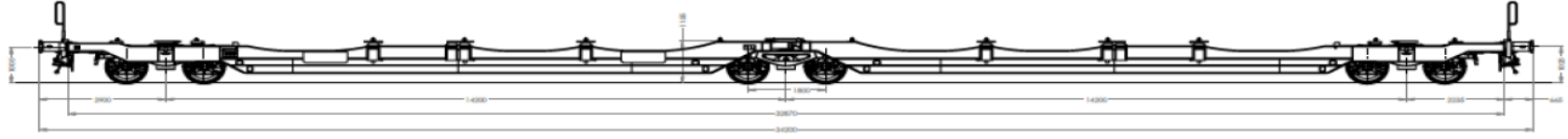


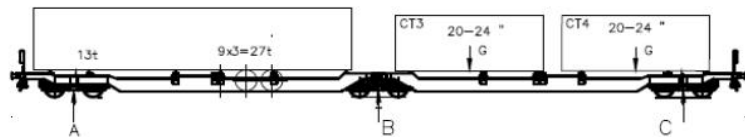
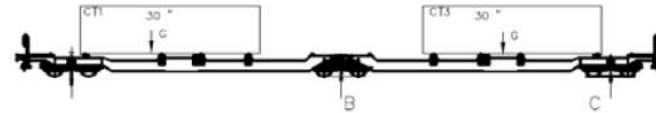
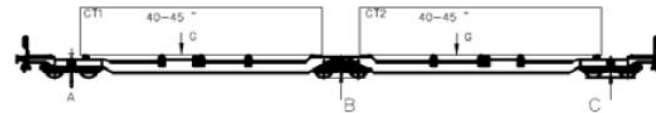
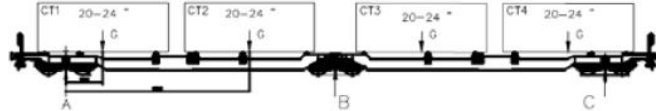
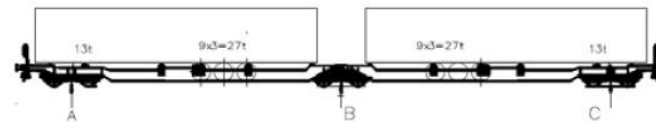
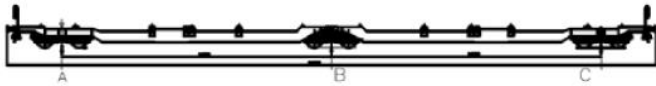
Wagon type: Sdggmrss double pocket wagon																
Suitable for trailers, megatrailers, containers and Swap Bodies																
PAYLOAD																
Tare weight	36t															
Max braked weight	108t															
Max handbraked weight	22t															
Max loads																
	<table border="1"> <thead> <tr> <th></th> <th>A</th> <th>B</th> <th>C</th> <th>D</th> </tr> </thead> <tbody> <tr> <td>S</td> <td>60.0t</td> <td>72.0t</td> <td>87.0 t</td> <td>99.0 t</td> </tr> <tr> <td>SS</td> <td>60.0t</td> <td>72.0t</td> <td colspan="2">84.0 t</td> </tr> </tbody> </table>		A	B	C	D	S	60.0t	72.0t	87.0 t	99.0 t	SS	60.0t	72.0t	84.0 t	
	A	B	C	D												
S	60.0t	72.0t	87.0 t	99.0 t												
SS	60.0t	72.0t	84.0 t													
DIMENSIONS																
Length over buffers	34200mm															
Loading length	2x 16230mm															
Distance between pivots	2x 14200mm															
Axle base bogie	1800mm															
Loading height over rail (unloaded)	1155mm															
Length of load pocket	10490mm															
Saddle height for semi-trailer	880mm, 980mm, 1130mm															
Gauge	1435mm															
Loading gauge	G1															
TECHNICAL DATA																
Axle load	22,5															
Bogies	Y25 Ls(s)															
Brake	KE-GP-A(K)															
OPERATION																
Max. Speed																
Min. Curve (individual wagon)	75m															
Min. Curve (multiple wagons)	150m															
Field of use	TEN(G1)GE															



ZUG RENTALS



Loading scheme double pocket wagon type Sdggmrss



Engengewichtverteilung			
Drehgestell	A (t)	B (t)	C (t)
F _{max}	11,6	12,8	11,6
Engengewicht Total	36,0		

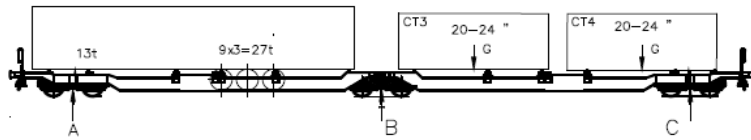
Beladeschema Sattelaufleger(13t+27t)				
No	Radstang R (mm)	Drehgestelllast		
		A (t)	B (t)	C (t)
1	7300	37,72	40,56	37,72
2	7500	37,34	41,32	37,34
3	7700	36,96	40,08	36,96
4	7900	36,58	42,84	36,58
5	8100	36,20	43,70	36,20

Beladeschema CT											
No	CT1		CT2		CT3		CT4		Drehgestelllast		
	CT type	Gewicht(t)	CT type	Gewicht(t)	CT type	Gewicht(t)	CT type	Gewicht(t)	A (t)	B (t)	C (t)
6	20-24	36	20-24	0	20-24	0	20-24	36	43,00	22,00	43,00
7	20-24	36	20-24	6	20-24	6	20-24	36	44,30	30,30	44,30
8	20-24	34	20-24	11	20-24	11	20-24	34	44,68	36,64	44,68
9	20-24	32	20-24	17	20-24	17	20-24	32	44,80	44,40	44,80
10	20-24	29	20-24	18	20-24	18	20-24	29	42,50	44,90	42,50
11	20-24	24	20-24	19	20-24	19	20-24	24	38,48	45,00	38,48
12	20-24	19,5	20-24	20	20-24	20	20-24	19,5	35,00	45,00	35,00
13	20-24	14	20-24	21	20-24	21	20-24	14	30,50	45,00	30,50
14	20-24	8	20-24	22	20-24	22	20-24	8	28,30	45,00	28,30
15	20-24	0	20-24	23,5	20-24	23,5	20-24	0	18,80	45,00	18,80

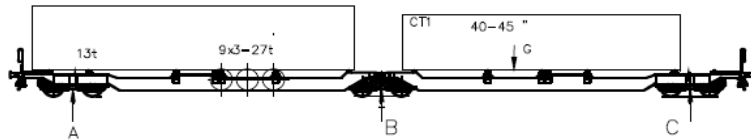
Beladeschema CT							
No	CT1		CT2		Drehgestelllast		
	CT type	Gewicht(t)	CT type	Gewicht(t)	A (t)	B (t)	C (t)
16	40-45	34	40-45	35	29,50	45,00	30,50

Beladeschema CT							
No	CT1		CT2		Drehgestelllast		
	CT type	Gewicht(t)	CT type	Gewicht(t)	A (t)	B (t)	C (t)
17	30-31	36	30-31	36	34,30	39,00	34,30

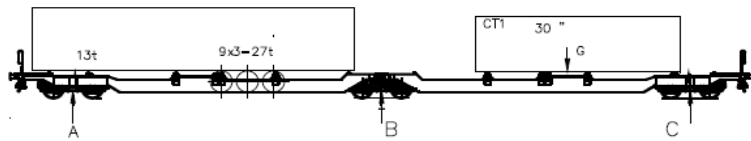
Beladeschema Sattelaufleger(13t+27t)+2x20								
No	Radstang R (mm)	CT1		CT2		Drehgestelllast		
		CT type	Gewicht(t)	CT type	Gewicht(t)	A (t)	B (t)	C (t)
1	7300	20-24	19	20-24	24	37,72	42,92	38,46
2	7500	20-24	19	20-24	24	37,34	43,30	38,46
3	7700	20-24	19	20-24	24	36,96	43,68	38,46
4	7900	20-24	19	20-24	24	36,58	44,06	38,46
5	8100	20-24	19	20-24	24	36,20	44,49	38,46



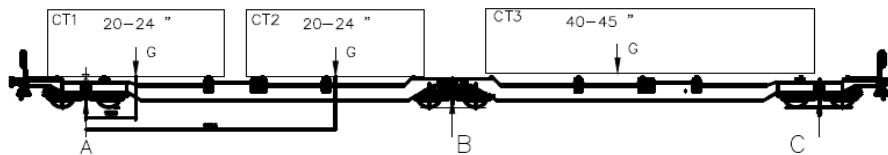
Beladeschema Sattelaufleger(13t+27t)+2x20						
No	Radstang R (mm)	CTI		Drehgestelllast		
		CT type	Gewicht(t)	A (t)	B (t)	C (t)
1	7300	20-24	23,5	37,72	42,93	18,79
2	7500	20-24	23,5	37,34	43,21	18,79
3	7700	20-24	23,5	36,96	43,69	18,79
4	7900	20-24	23,5	36,58	44,07	18,79
5	8100	20-24	23,5	36,30	44,50	18,79



Beladeschema Sattelaufleger(13t+27t)+2x20						
No	Radstang R (mm)	CTI		Drehgestelllast		
		CT type	Gewicht(t)	A (t)	B (t)	C (t)
1	7300	40-45	35	37,72	42,83	30,33
2	7500	40-45	35	37,34	43,21	30,33
3	7700	40-45	35	36,96	43,79	30,33
4	7900	40-45	35	36,58	44,07	30,33
5	8100	40-45	35	36,20	44,50	30,33



Beladeschema Sattelaufleger(13t+27t)+2x20						
No	Radstang R (mm)	CTI		Drehgestelllast		
		CT type	Gewicht(t)	A (t)	B (t)	C (t)
1	7300	30-31	36	37,72	36,86	34,24
2	7500	30-31	36	37,34	40,24	34,24
3	7700	30-31	36	36,96	40,62	34,24
4	7900	30-31	36	36,58	41,00	34,24
5	8100	30-31	36	36,20	41,43	34,24



Beladeschema CT									
No	CT1		CT2		CT3		Drehgestelllast		
	CT type	Gewicht(t)	CT type	Gewicht(t)	CT type	Gewicht(t)	A (t)	B (t)	C (t)
1	20-24	36	20-24	0	20-24	0	43,00	33,67	30,29
2	20-24	36	20-24	6	20-24	6	44,31	37,79	30,29
3	20-24	34	20-24	11	20-24	11	44,68	41,00	30,29
4	20-24	32	20-24	17	20-24	17	44,81	44,84	30,29